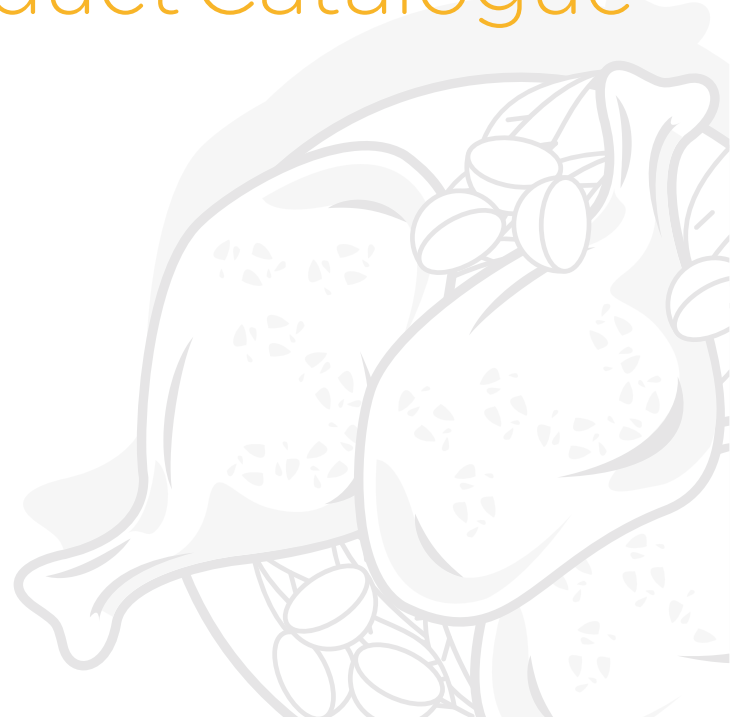




# keskinoglu

## Product Catalogue





## **Whole Chicken and Chicken Parts 5**

### **Whole Chicken 6**

Whole Chicken 6

### **Breast 7**

Frozen Chicken Half Breast (Skinless, Boneless) 7

Frozen Chicken Breast (Boneless) 7

Frozen Chicken Breast (Bone-in, Skin-on) 8

Frozen Chicken Inner Fillet 8

### **Leg 9**

Frozen Chicken Leg Quarter 9

Frozen Chicken Drumstick 9

Frozen Chicken Thigh (Skinless, Boneless) 10

Frozen Chicken Thigh (Boneless) 10

### **Wings 11**

Frozen Chicken Grill Wings 11

Frozen Chicken Drumette 11

Frozen Chicken Mid Joint Wings 12

Frozen Chicken 3-Joint Wings 12

Frozen Chicken 2-Joint Wings 13

## **Offals and Others 14**

Frozen Chicken Gizzard 14

Frozen Chicken Liver 14

Frozen Chicken Heart 15

Frozen Chicken Paws A Grade 15

(Large > 30 gr) 15

Frozen Chicken Paws A Grade 16

(Small < 30 gr) 16

Frozen Chicken Paws B Grade 16

Frozen Chicken Tails 17

Frozen Chicken Wing Tips 17

Frozen Chicken Upper Back 18

Frozen Chicken Lower Back 18

Frozen Chicken Skin 19

Frozen Chicken Cartilage 19

Frozen Chicken MDM 20

## **Further Processed 21**

### **Delicatessen 22**

Chicken Franks 22

Frozen Chicken Sujuck 22

Frozen Chicken Mortadella 23

### **Coated 24**

Frozen Chicken Nugget 24

Frozen Chicken Schnitzel 25

Frozen Chicken Cordon Bleu 26

Frozen Chicken Croquettes 26

Frozen Chicken Rings 27

Frozen Chicken Crispy Burger 27

Frozen Chicken Crispy Balls 28

Frozen Chicken Crispy Fillets 28

Frozen Chicken Crispy Tenders 29

Frozen Bucket Crispy Party (Kovva) 29

Frozen Mexico Shots 30

Frozen Fileturka 30

## **Meatball-Kebab 31**

Frozen Chicken Hamburger Meatball 31

Frozen Chicken Meatball 31

Frozen Chicken Kebab 32

## **Shawarma 33**

Frozen Chicken Shawarma 33

## **Al Tabii 34**

Whole Chicken 35

Chicken Franks 36

## **L-CHICK 37**

Chicken Franks 38

# About Us

Keskinoğlu, which began its egg production operations with a small chicken farm in 1963, now exports its chicken meat, table eggs, pasteurized eggs, viols, and processed products to various parts of the world from its facilities in Manisa Akhisar. Keskinoğlu, the only fully integrated poultry producer in Türkiye, connects its products with consumers through its three regional directorates and an extensive dealer network.

In 2023, Matlı Companies Group acquired Keskinoğlu and thus Keskinoğlu has strengthened its position because of that Matlı Group, which is the largest feed producer, the largest egg producer, and one of the top five milk producers in Türkiye. And continues its operations in 7 regions of the country with 25 companies, 11 brands, 2 R&D Centers, over 10,000 suppliers, and more than 5,000 employees in 81 provinces and nearly 1,000 dealerships.

Matlı ensures the quality of its products directly from the source through its golden supply chain. Keskinoğlu meticulously manages the entire process of its products from the ground to the table. It acquires high-quality raw materials through licensed warehousing activities. By feeding chickens with its own produced plant-based feeds, Keskinoğlu transforms this into highly nutritious chicken meat and eggs within its organization, bringing out the delicious flavors.

Since 2006, Matlı has also been conducting research and educational activities in the fields of animal care, nutrition, and health under the Ömer Matlı Academy. In 2023, it established a Research and Development Center within Keskinoğlu to develop new products. Keskinoğlu holds the BRC Quality and Food Safety Management System Certificate and operates with the most state-of-the-art technology in control and tracking systems from the initial stage to the final stage of production. It follows international standards by implementing high hygiene standards in its breeding, pullet, and hatchery facilities. Following its fully integrated strategy, it offers eggs in viols with its own produced egg cartons. It continues to expand its product range every day to provide quality service to its customers. Keskinoğlu's flavors, tailored to the Turkish palate, are presented in accordance with quality and halal slaughter standards. Therefore, it guides its activities with the goal of being the first brand that comes to mind when it comes to "Flavor" and "Trust." It has been a guest at tables for years, accompanying lives with chicken and eggs that are enjoyed in every meal.



# Whole Chicken and Chicken Parts





## Frozen Whole Chicken



	Primary Pack			Secondary Pack			Pallet	
	Package Type	Pieces Per Pack	Net Weigh (g)	Pack Per Carton	Net Weight (kg)*	Carton Dimensions (mm)	Carton Per Pallet	Net Weight (kg)*
Size 8	IVP Bag	1	0,750 - 0,850	10	8,03	385x595x80	110	884
Size 9	IVP Bag	1	0,850 - 0,950	10	9,02	385x595x80	110	992
Size 10	IVP Bag	1	0,950 - 1,050	10	10,00	385x595x80	105	1050
Size 11	IVP Bag	1	1,050 - 1,150	10	11,00	385x595x80	105	1155
Size 12	IVP Bag	1	1,150 - 1,250	10	12,00	385x595x105	95	1140
Size 13	IVP Bag	1	1,250 - 1,350	10	13,00	375x585x95	95	1235
Size 14	IVP Bag	1	1,350 - 1,450	10	14,00	375x585x111	85	1190
Size 15	IVP Bag	1	1,450 - 1,550	10	15,00	375x585x111	85	1275
Size 16	IVP Bag	1	1,550 - 1,650	10	16,00	375x585x111	80	1280
Size 17	IVP Bag	1	1,650 - 1,750	9	15,30	375x585x111	80	1224
Size 18	IVP Bag	1	1,750 - 1,850	9	16,20	375x585x131	65	1053
Size 19	IVP Bag	1	1,850 - 1,950	8	15,20	375x585x131	65	988
Size 20	IVP Bag	1	1,950 - 2,050	8	16,00	375x585x131	65	1040
Size 21	IVP Bag	1	2,050 - 2,150	8	16,87	375x585x131	70	1180
Size 22	IVP Bag	1	2,150 - 2,250	8	17,60	375x585x131	70	1232
Size 23	IVP Bag	1	2,250 - 2,350	8	18,40	375x585x131	70	1288

**SHELF LIFE:** It varies depending on the country to which exports are made, demands and storage conditions.  
**STORAGE CONDITIONS:** Frozen products should be stored at -18°C.

\*It indicates the average weight.

## Frozen Chicken Half Breast (Skinless, Boneless)



Primary Pack			Secondary Pack			Pallet		
Package Type	Pieces Per Pack	Net Weigh (g)	Pack Per Carton	Net Weight (kg)*	Carton Dimensions (mm)	Carton Per Pallet	Net Weight (kg)*	
450 g	Tray	2	0,435 - 0,465	12	5,40	385x595x105	100	540
750 g	Tray	3	0,735 -0,765	8	6,00	375x585x95	100	600
900 g	Tray	4	0,885 - 0,915	8	7,20	385x595x105	100	720
2000 g	Bag	8	1,850 - 2,150	5	10,00	385x595x80	120	1200
Bulk	Bulk in Carton	40	-	-	9,50 - 10,50	385x595x80	120	1203

## Frozen Chicken Breast (Boneless)



Primary Pack			Secondary Pack			Pallet		
Package Type	Pieces Per Pack	Net Weigh (g)	Pack Per Carton	Net Weight (kg)*	Carton Dimensions (mm)	Carton Per Pallet	Net Weight (kg)*	
Bulk	Bulk in Carton	22	-	-	9,50 - 10,50	385x595x80	120	1200

**SHELF LIFE:** It varies depending on the country to which exports are made, demands and storage conditions.  
**STORAGE CONDITIONS:** Frozen products should be stored at -18°C.

\*It indicates the average weight.



## Frozen Chicken Breast (Bone-in, Skin-on)



	Primary Pack			Secondary Pack			Pallet	
	Package Type	Pieces Per Pack	Net Weigh (g)	Pack Per Carton	Net Weight (kg)*	Carton Dimensions (mm)	Carton Per Pallet	Net Weight (kg)*
Bulk	Bulk in Carton	11	-	-	9,50 - 10,50	385x595x105	95	950



## Frozen Chicken Inner Fillet



	Primary Pack			Secondary Pack			Pallet	
	Package Type	Pieces Per Pack	Net Weigh (g)	Pack Per Carton	Net Weight (kg)*	Carton Dimensions (mm)	Carton Per Pallet	Net Weight (kg)*
900 g	Tray	15	0,885 - 0,915	8	7,20	375x585x95	100	720
Bulk	Bulk in Carton	160 - 165	-	-	9,50 - 10,50	385x595x80	120	1200

**SHELF LIFE:** It varies depending on the country to which exports are made, demands and storage conditions.  
**STORAGE CONDITIONS:** Frozen products should be stored at -18°C.

\*It indicates the average weight.

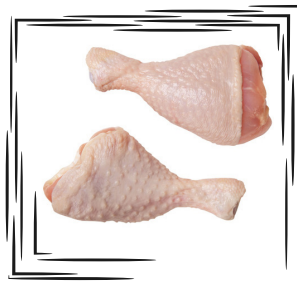




## Frozen Chicken Leg Quarter



	Primary Pack			Secondary Pack			Pallet	
	Package Type	Pieces Per Pack	Net Weigh (g)	Pack Per Carton	Net Weight (kg)*	Carton Dimensions (mm)	Carton Per Pallet	Net Weight (kg)*
Bulk	Bulk in Carton	20	-	-	9,50 - 10,50	385x595x80	120	1205



## Frozen Chicken Drumstick



	Primary Pack			Secondary Pack			Pallet	
	Package Type	Pieces Per Pack	Net Weigh (g)	Pack Per Carton	Net Weight (kg)*	Carton Dimensions (mm)	Carton Per Pallet	Net Weight (kg)*
750 g	Tray	6	0,740 - 0,760	8	6,00	385x595x105	100	600
900 g	Tray	8	0,885 - 0,915	8	7,20	375x585x95	100	720
Bulk	Bulk in Carton	85	-	-	9,50 - 10,50	385x595x80	120	1224



## Frozen Chicken Thigh (Skinless, Boneless)



	Primary Pack			Secondary Pack			Pallet	
	Package Type	Pieces Per Pack	Net Weigh (g)	Pack Per Carton	Net Weight (kg)*	Carton Dimensions (mm)	Carton Per Pallet	Net Weight (kg)*
900 g	Tray	6	0,885 - 0,915	8	7,20	375x585x95	100	720
2000 g	Bag	15	1,985 - 2,015	5	10,00	385x595x80	120	1200
Bulk	Bulk in Carton	70 - 75	-	-	9,50 - 10,50	375x585x95	95	950



## Frozen Chicken Thigh (Boneless)



	Primary Pack			Secondary Pack			Pallet	
	Package Type	Pieces Per Pack	Net Weigh (g)	Pack Per Carton	Net Weight (kg)*	Carton Dimensions (mm)	Carton Per Pallet	Net Weight (kg)*
Bulk	Bulk in Carton	50-55	-	-	9,50 - 10,50	375x585x95	95	950

**SHELF LIFE:** It varies depending on the country to which exports are made, demands and storage conditions.  
**STORAGE CONDITIONS:** Frozen products should be stored at -18°C.

\*It indicates the average weight.

## Frozen Chicken Grill Wings



Primary Pack			Secondary Pack			Pallet		
Package Type	Pieces Per Pack	Net Weigh (g)	Pack Per Carton	Net Weight (kg)*	Carton Dimensions (mm)	Carton Per Pallet	Net Weight (kg)*	
900 g	Tray	22	0,885 - 0,915	8	7,20	375x585x95	100	720
	Bulk	Bulk in Carton	200	-	9,50 - 10,50	375x585x95	95	950

## Frozen Chicken Drumette



Primary Pack			Secondary Pack			Pallet		
Package Type	Pieces Per Pack	Net Weigh (g)	Pack Per Carton	Net Weight (kg)*	Carton Dimensions (mm)	Carton Per Pallet	Net Weight (kg)*	
900 g	Tray	19	0,885 - 0,915	8	7,20	375x585x95	100	720



## Frozen Chicken Mid Joint Wings



Package Type	Primary Pack		Secondary Pack			Pallet	
	Pieces Per Pack	Net Weigh (g)	Pack Per Carton	Net Weight (kg)*	Carton Dimensions (mm)	Carton Per Pallet	Net Weight (kg)*
Bulk in Carton	250	-	-	9,50 - 10,50	375x585x95	95	950



## Frozen Chicken 3-Joint Wings



Package Type	Primary Pack		Secondary Pack			Pallet	
	Pieces Per Pack	Net Weigh (g)	Pack Per Carton	Net Weight (kg)*	Carton Dimensions (mm)	Carton Per Pallet	Net Weight (kg)*
Bulk in Carton	200	-	-	9,50-10,50	385x595x80	95	950

**SHELF LIFE:** It varies depending on the country to which exports are made, demands and storage conditions.  
**STORAGE CONDITIONS:** Frozen products should be stored at -18°C.

\*It indicates the average weight.

# Frozen Chicken 2-Joint Wings



	Primary Pack			Secondary Pack			Pallet	
Package Type	Pieces Per Pack	Net Weigh (g)	Pack Per Carton	Net Weight (kg)*	Carton Dimensions (mm)	Carton Per Pallet	Net Weight (kg)*	
Bulk	Bulk in Carton	180	-	-	9,50-10,50	385x595x80	95	950





## Frozen Chicken Gizzard



Primary Pack			Secondary Pack			Pallet		
Package Type	Pieces Per Pack	Net Weigh (g)	Pack Per Carton	Net Weight (kg)*	Carton Dimensions (mm)	Carton Per Pallet	Net Weight (kg)*	
450 g	Tray	21-22	0,435 - 0,465	18	8,10	375x585x111	100	810
1000 g	Bag	40-45	0,985 - 1,015	10	10,00	385x595x80	120	1200
Bulk	Bulk in Carton	440 - 450	-	-	9,50 - 10,50	385x595x80	120	1200



## Frozen Chicken Liver



Primary Pack			Secondary Pack			Pallet		
Package Type	Pieces Per Pack	Net Weigh (g)	Pack Per Carton	Net Weight (kg)*	Carton Dimensions (mm)	Carton Per Pallet	Net Weight (kg)*	
450 g	Tray	8	0,435-0,465	18	8,14	375x585x111	100	814
1000 g	Bag	15-16	0,985 - 1,015	10	10,00	385x595x80	120	1200
Bulk	Bulk in Carton	160 - 165	-	-	9,50 - 10,50	385x595x80	120	1202

**SHELF LIFE:** It varies depending on the country to which exports are made, demands and storage conditions.  
**STORAGE CONDITIONS:** Frozen products should be stored at -18°C.

\*It indicates the average weight.



## Frozen Chicken Heart



Package Type	Primary Pack		Secondary Pack			Pallet	
	Pieces Per Pack	Net Weigh (g)	Pack Per Carton	Net Weight (kg)*	Carton Dimensions (mm)	Carton Per Pallet	Net Weight (kg)*
450 g Tray	18	0,435 - 0,465	12	5,00	375x585x111	100	500



## Frozen Chicken Paws A Grade (Large > 30gr)



Package Type	Primary Pack		Secondary Pack			Pallet		
	Pieces Per Pack	Net Weigh (g)	Pack Per Carton	Net Weight (kg)*	Carton Dimensions (mm)	Carton Per Pallet	Net Weight (kg)*	
Bulk	Bulk in Carton	300	-	-	11	385x595x80	105	1155



## Frozen Chicken Paws A Grade (Small < 30gr )



	Primary Pack			Secondary Pack			Pallet	
	Package Type	Pieces Per Pack	Net Weigh (g)	Pack Per Carton	Net Weight (kg)*	Carton Dimensions (mm)	Carton Per Pallet	Net Weight (kg)*
Bulk	Bulk in Carton	350-400	-	-	11	385x595x80	105	1155



## Frozen Chicken Paws B Grade



	Primary Pack			Secondary Pack			Pallet	
	Package Type	Pieces Per Pack	Net Weigh (g)	Pack Per Carton	Net Weight (kg)*	Carton Dimensions (mm)	Carton Per Pallet	Net Weight (kg)*
Bulk	Bulk in Carton	250-300	-	-	11	385x595x80	105	1155



## Frozen Chicken Tails



	Primary Pack		Secondary Pack			Pallet	
Package Type	Pieces Per Pack	Net Weigh (g)	Pack Per Carton	Net Weight (kg)*	Carton Dimensions (mm)	Carton Per Pallet	Net Weight (kg)*
Bulk	Bulk in Carton	450	-	9,50 - 10,50	385x595x80	120	1200

## Frozen Chicken Wing Tips



	Primary Pack		Secondary Pack			Pallet	
Package Type	Pieces Per Pack	Net Weigh (g)	Pack Per Carton	Net Weight (kg)*	Carton Dimensions (mm)	Carton Per Pallet	Net Weight (kg)*
Bulk	Bulk in Carton	835	-	9,50 -10,50	385x595x80	120	1200



## Frozen Chicken Upper Back



Package Type	Primary Pack		Secondary Pack			Pallet		
	Pieces Per Pack	Net Weigh (g)	Pack Per Carton	Net Weight (kg)*	Carton Dimensions (mm)	Carton Per Pallet	Net Weight (kg)*	
Bulk	Bulk in Carton	60	-	-	9,50 - 10,50	385x595x80	95	950



## Frozen Chicken Lower Back



Package Type	Primary Pack		Secondary Pack			Pallet		
	Pieces Per Pack	Net Weigh (g)	Pack Per Carton	Net Weight (kg)*	Carton Dimensions (mm)	Carton Per Pallet	Net Weight (kg)*	
Bulk	Bulk in Carton	60	-	-	9,50 - 10,50	385x595x80	95	950

**SHELF LIFE:** It varies depending on the country to which exports are made, demands and storage conditions.  
**STORAGE CONDITIONS:** Frozen products should be stored at -18°C.

\*It indicates the average weight.

## Frozen Chicken Skin



Package Type	Primary Pack		Secondary Pack			Pallet	
	Pieces Per Pack	Net Weigh (g)	Pack Per Carton	Net Weight (kg)*	Carton Dimensions (mm)	Carton Per Pallet	Net Weight (kg)*
Bulk Bulk in Carton	150 - 155	-	-	9,50 - 10,50	385x595x80	120	1200

## Frozen Chicken Cartilage



Package Type	Primary Pack		Secondary Pack			Pallet	
	Pieces Per Pack	Net Weigh (g)	Pack Per Carton	Net Weight (kg)*	Carton Dimensions (mm)	Carton Per Pallet	Net Weight (kg)*
2000g Bag	400	1,985 - 2,015	5	10,00	385x595x80	120	1200



## Frozen Chicken MDM

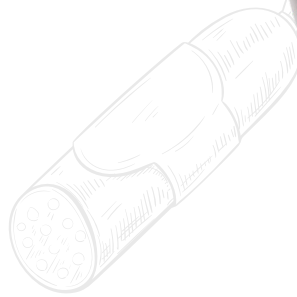


	Primary Pack			Secondary Pack			Pallet	
	Package Type	Pieces Per Pack	Net Weigh (g)	Pack Per Carton	Net Weight (kg)*	Carton Dimensions (mm)	Carton Per Pallet	Net Weight (kg)*
Neck	Plate	-	-	-	11-13	-	75	750-1000
Back	Plate	-	-	-	11-13	-	75	750-1000

**SHELF LIFE:** It varies depending on the country to which exports are made, demands and storage conditions.  
**STORAGE CONDITIONS:** Frozen products should be stored at -18°C.

\*It indicates the average weight.

# Further Processed





## Chicken Franks



	Primary Pack		Secondary Pack			Pallet	
	Package Type	Pieces Per Pack	Pack Per Carton	Net Weight (kg)	Carton Dimensions(mm)	Carton Per Pallet	Net Weight (kg)
340 g	Vacuum bag	10	24	8,16	248x323x158	80	652,8



## Frozen Chicken Sujuck



	Primary Pack		Secondary Pack			Pallet	
	Package Type	Pieces Per Pack	Pack Per Carton	Net Weight (kg)	Carton Dimensions(mm)	Carton Per Pallet	Net Weight (kg)
100 g	Casing	1	100	10	280x380x210	60	600
250 g	Casing	1	36	9	280x380x210	60	540

**SHELF LIFE:** It varies depending on the country to which exports are made, demands and storage conditions.  
**STORAGE CONDITIONS:** Frozen products should be stored at -18°C.

# Frozen Chicken Mortadella



	Primary Pack		Secondary Pack			Pallet	
	Package Type	Pieces Per Pack	Pack Per Carton	Net Weight (kg)	Carton Dimensions(mm)	Carton Per Pallet	Net Weight (kg)
250 g	Casing	1	22	5,5	245x365x130	80	440
700 g	Casing	1	15	10,5	275X340X175	48	504
850 g	Casing	1	10	8,5	195x385x285	60	510

DELICATESSEN



## Frozen Chicken Nugget



	Primary Pack		Secondary Pack			Pallet	
	Package Type	Pieces Per Pack	Pack Per Carton	Net Weight (kg)	Carton Dimensions(mm)	Carton Per Pallet	Net Weight (kg)
200 g	Polybag	9± 1	40	8	280x380x210	70	560
260 g	Polybag	11± 1	28	7,28	280x380x210	70	509,6
900 g	Polybag	40± 2	14	12,6	380x395x227	36	453,6
1000 g	Polybag	45± 2	6	6	190x390x230	98	588
1000 g	Polybag	45± 2	10	10	370x380x220	36	360
1000 g	Polybag	45± 2	12	12	380x395x227	36	432
8 kg	Bulk	365± 2	1	8	195x385x285	100	800
10 kg	Bulk	455± 2	1	10	195x385x285	60	600

**SHelf LIFE:** It varies depending on the country to which exports are made, demands and storage conditions.  
**STORAgE CONDITIONS:** Frozen products should be stored at -18°C.



# Frozen Chicken Schnitzel



	Primary Pack		Secondary Pack			Pallet	
	Package Type	Pieces Per Pack	Pack Per Carton	Net Weight (kg)	Carton Dimensions(mm)	Carton Per Pallet	Net Weight (kg)
450 g	Polybag	4 ± 1	14	6,3	280x380x210	70	441
1000 g	Polybag	10 ± 1	6	6	190x390x230	98	588
1000 g	Polybag	10 ± 1	10	10	380x395x227	36	360
1000 g	Polybag	10 ± 1	12	12	380x395x227	36	432
8 kg	Bulk	80 ± 1	1	8	195x385x285	60	480
9 kg	Bulk	90 ± 1	1	9	195x385x285	60	540

COATED



## Frozen Chicken Cordon Bleu



	Primary Pack		Secondary Pack			Pallet	
	Package Type	Pieces Per Pack	Pack Per Carton	Net Weight (kg)	Carton Dimensions(mm)	Carton Per Pallet	Net Weight (kg)
500 g	Polybag	5± 1	14	7	280x380x210	70	490
1000 g	Polybag	10± 1	10	10	380x395x227	36	360
1000 g	Polybag	10± 1	12	12	380x395x227	36	432
8 kg	Bulk	80± 1	1	8	195x385x285	60	480



## Frozen Chicken Croquettes



	Primary Pack		Secondary Pack			Pallet	
	Package Type	Pieces Per Pack	Pack Per Carton	Net Weight (kg)	Carton Dimensions(mm)	Carton Per Pallet	Net Weight (kg)
400 g	Polybag	18± 1	14	5,6	280x380x210	70	392
1000 g	Polybag	45± 2	6	6	190x390x230	98	588
1000 g	Polybag	45± 2	12	12	380x395x227	36	432

**SHelf LIFE:** It varies depending on the country to which exports are made, demands and storage conditions.  
**STORAgE CONDITIONS:** Frozen products should be stored at -18°C.



## Frozen Chicken Rings



	Primary Pack		Secondary Pack			Pallet	
	Package Type	Pieces Per Pack	Pack Per Carton	Net Weight (kg)	Carton Dimensions(mm)	Carton Per Pallet	Net Weight (kg)
440 g	Polybag	13± 1	14	6,16	280x380x210	70	431,2
1000 g	Polybag	30± 2	12	12	380x395x227	36	432



## Frozen Chicken Crispy Burger



	Primary Pack		Secondary Pack			Pallet	
	Package Type	Pieces Per Pack	Pack Per Carton	Net Weight (kg)	Carton Dimensions(mm)	Carton Per Pallet	Net Weight (kg)
450 g	Polybag	5± 1	24	10,8	380x395x227	36	388,8
1000 g	Polybag	11± 1	6	6	195x385x285	60	360
1000 g	Polybag	11± 1	10	10	370x380x220	36	360
1000 g	Polybag	11± 1	12	12	380x395x227	36	432



## Frozen Chicken Crispy Balls



	Primary Pack		Secondary Pack			Pallet	
	Package Type	Pieces Per Pack	Pack Per Carton	Net Weight (kg)	Carton Dimensions(mm)	Carton Per Pallet	Net Weight (kg)
450 g	Polybag	56± 2	16	7,2	280x380x210	70	504
1000 g	Polybag	125± 2	12	12	380x395x227	36	432



## Frozen Chicken Crispy Fillets



	Primary Pack		Secondary Pack			Pallet	
	Package Type	Pieces Per Pack	Pack Per Carton	Net Weight (kg)	Carton Dimensions(mm)	Carton Per Pallet	Net Weight (kg)
1000 g	Polybag	30± 2	12	12	380x395x227	36	432



## Frozen Chicken Crispy Tenders



	Primary Pack		Secondary Pack			Pallet	
	Package Type	Pieces Per Pack	Pack Per Carton	Net Weight (kg)	Carton Dimensions(mm)	Carton Per Pallet	Net Weight (kg)
1000 g	Polybag	30± 2	12	12	380x395x227	36	432



## Frozen Bucket Crispy Party (Kovva)



	Primary Pack		Secondary Pack			Pallet	
	Package Type	Pieces Per Pack	Pack Per Carton	Net Weight (kg)	Carton Dimensions(mm)	Carton Per Pallet	Net Weight (kg)
850 g	Bucket	-	4	3,4	355x355x170	48	163,2



## Frozen Mexico Shots



	Primary Pack		Secondary Pack			Pallet	
	Package Type	Pieces Per Pack	Pack Per Carton	Net Weight (kg)	Carton Dimensions(mm)	Carton Per Pallet	Net Weight (kg)
1000 g	Polybag	50± 2	12	12	380x395x227	36	432



## Frozen Fileturka



	Primary Pack		Secondary Pack			Pallet	
	Package Type	Pieces Per Pack	Pack Per Carton	Net Weight (kg)	Carton Dimensions(mm)	Carton Per Pallet	Net Weight (kg)
1000 g	Polybag	55± 2	10	10	380x395x227	36	360



## Frozen Chicken Hamburger Meatball



	Primary Pack		Secondary Pack			Pallet	
	Package Type	Pieces Per Pack	Pack Per Carton	Net Weight (kg)	Carton Dimensions(mm)	Carton Per Pallet	Net Weight (kg)
500 g	Polybag	11± 1	12	6	280x380x210	70	420



## Frozen Chicken Meatball



	Primary Pack		Secondary Pack			Pallet	
	Package Type	Pieces Per Pack	Pack Per Carton	Net Weight (kg)	Carton Dimensions(mm)	Carton Per Pallet	Net Weight (kg)
450 g	Polybag	13± 2	24	10,8	380x395x227	36	388,8
1000 g	Polybag	33± 2	6	6	190x390x230	70	420



## Frozen Chicken Kebab



	Primary Pack		Secondary Pack			Pallet	
	Package Type	Pieces Per Pack	Pack Per Carton	Net Weight (kg)	Carton Dimensions(mm)	Carton Per Pallet	Net Weight (kg)
400 g	Thermoform map	9± 1	6	2,4	137x330x195	144	345,6
1000 g	Polybag	23± 2	12	12	380x395x227	36	432



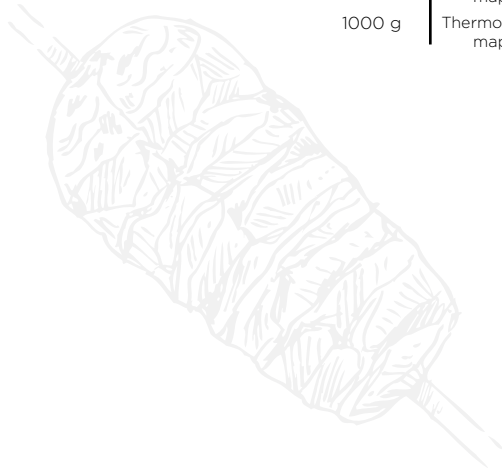
**SHelf LIFE:** It varies depending on the country to which exports are made, demands and storage conditions.  
**STORAgE CONDITIONS:** Frozen products should be stored at -18°C.



# Frozen Chicken Shawarma



	Primary Pack		Secondary Pack			Pallet	
	Package Type	Pieces Per Pack	Pack Per Carton	Net Weight (kg)	Carton Dimensions(mm)	Carton Per Pallet	Net Weight (kg)
200 g	Thermoform map	-	9	1,8	137x330x195	144	259,2
1000 g	Thermoform map	-	8	8	195x385x285	60	480



# AL TABİİ



## Whole Chicken



WHOLE CHICKEN

	Primary Pack			Secondary Pack			Pallet	
	Package Type	Pieces Per Pack	Net Weight (g)	Pack Per Carton	Net Weight (kg)*	Carton Dimensions (mm)	Carton Per Pallet	Net Weight (kg)*
Size 8	IVP Bag	1	0,750 - 0,850	10	8,03	385x595x80	110	884
Size 9	IVP Bag	1	0,850 - 0,950	10	9,02	385x595x80	110	992
Size 10	IVP Bag	1	0,950 - 1,050	10	10,00	385x595x80	105	1050
Size 11	IVP Bag	1	1,050 - 1,150	10	11,00	385x595x80	105	1155
Size 12	IVP Bag	1	1,150 - 1,250	10	12,00	385x595x105	95	1140
Size 13	IVP Bag	1	1,250 - 1,350	10	13,00	375x585x95	95	1235
Size 14	IVP Bag	1	1,350 - 1,450	10	14,00	375x585x111	85	1190
Size 15	IVP Bag	1	1,450 - 1,550	10	15,00	375x585x111	85	1275
Size 16	IVP Bag	1	1,550 - 1,650	10	16,00	375x585x111	80	1280
Size 17	IVP Bag	1	1,650 - 1,750	9	15,30	375x585x111	80	1224
Size 18	IVP Bag	1	1,750 - 1,850	9	16,20	375x585x131	65	1053
Size 19	IVP Bag	1	1,850 - 1,950	8	15,20	375x585x131	65	988
Size 20	IVP Bag	1	1,950 - 2,050	8	16,00	375x585x131	65	1040
Size 21	IVP Bag	1	2,050 - 2,150	8	16,87	375x585x131	70	1181
Size 22	IVP Bag	1	2,150 - 2,250	8	17,60	375x585x131	70	1232
Size 23	IVP Bag	1	2,250 - 2,350	8	18,40	375x585x131	70	1288



## Chicken Franks



	Primary Pack			Secondary Pack			Pallet	
	Package Type	Pieces Per Pack	Net Weigh (g)	Pack Per Carton	Net Weight (kg)	Carton Dimensions (mm)	Carton Per Pallet	Net Weight (kg)
340 g	Vacuum Bag	10	340	24	8,16	250x320x165	80	652,8





**L-CHICK**



## Chicken Franks



Package Type	Primary Pack		Secondary Pack			Pallet	
	Pieces Per Pack	Net Weigh (g)	Pack Per Carton	Net Weight (kg)	Carton Dimensions (mm)	Carton Per Pallet	Net Weight (kg)
340 g Vacuum Bag	10	340	24	8,16	325x250x175	80	652,8

